

RING

MAURO LIPPARINI



MisuraEmme®

A stunning array of different thicknesses and geometric lines sets out the profile of the **Ring** side tables, whose structure is sleek and unusual. The dynamic design of the legs is matched by that of the entire structure, which accommodates the slender table top with sophisticated elegance.

TYPE / SMALL TABLES

TECHNICAL DESCRIPTION

Small and bedside tables available in three dimensions.

Structure in metal satined or gun metal.

Top in:

- varnished glass th.10mm (3/8" in)
- frosted varnished glass th.10mm (3/8" in)
- transparent glass th.10mm (3/8" in)
- frosted glass th.10mm (3/8" in)
- marble th.20 mm (6/8" in)



DESIGNER

MAURO LIPPARINI

Mauro Lipparini earned a degree in Architecture in 1980 from Università degli Studi of Florence, where he also worked as a professor. He won the international design contests Young & Designer Milan (1987) and International Du Pont Award Köln (Germany, 1988 and 1989). Lipparini's intense activity in the field of industrial design covers office and home furniture, the textile industry and other products created for many companies in Europe and Japan. In architecture and interior design, Lipparini has concentrated mainly on private and public housing, on showrooms, retail sales outlets and exposition installations.

Furthermore, Lipparini also designs and realizes advanced corporate identity image systems that range from graphics to editorial services to production. Lipparini's style is based on the essential shapes and the clear and decisive lines that are characteristic of natural minimalism. His creations are imbued with a joyful spirit and with an elating sense of aesthetic pleasure and creativity. Thanks to his free use of color, organic weave patterns and original visual ideas, Lipparini amplifies the palette of minimalism, conveying the spontaneity and power of this aesthetic style and projecting it towards a new era of great maturity and wellbeing.



TOP FINISHINGS

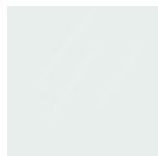
VARNISHED GLASS



FROSTED VARNISHED GLASS



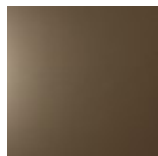
TRANSPARENT GLASS



V00 Extra
light

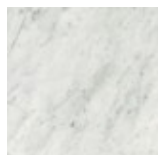


V05 Fumé

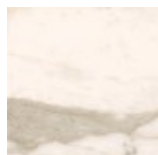


V01 Bronzo

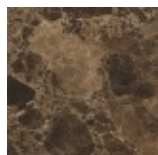
MARBLES



BC Bianco
Carrara
natural matt



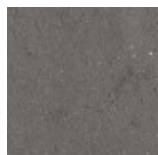
CA Calacatta
Oro natural
matt



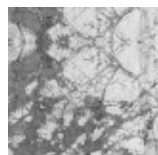
EM
Emperador
natural matt



TV
Travertino
natural matt



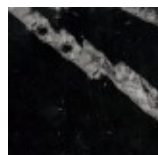
BA Basaltite
natural matt



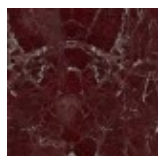
IG Invisible
Grey natural
matt



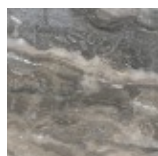
GT Grey
Stone
natural
glossy



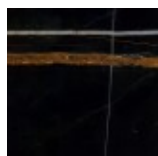
MR
Marquinia
natural
glossy



RL Rosso
Lepanto
natural
glossy



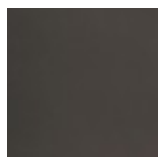
OR Orobico
natural
glossy



SR Sahara
Noir glossy
polyester

STRUCTURE FINISHINGS

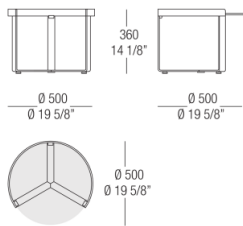
METALS



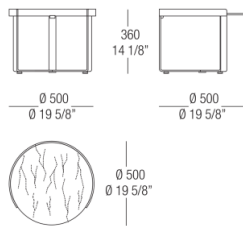
524
Varnished
Gun metal

DIMENSIONS

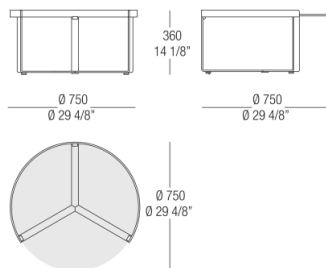
Small table Ø 500 mm glass top



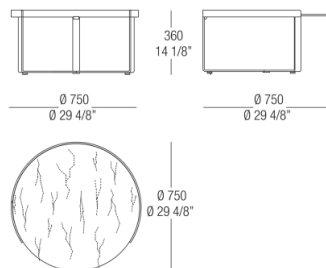
Small table Ø 500 mm marble top



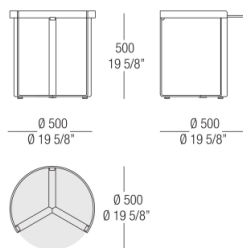
Small table Ø 750 mm glass top



Small table Ø 750 mm marble top



Small table Ø 750 mm with glass top



Small table Ø 500 mm with marble top

