

BRERA

FRANCESCO LUCCHESI



A homage to contemporaneity yet bold enough to draw inspiration from classic styles, the **Brera** chair is all unique design and strong identity. The internal structure is made from oval tubing, while the exterior is completely covered in leather. The unusual inclination of the top part of the padded backrest brings added dynamism, while also making the chair easier to grasp.

MisuraEmme[®]

TYPE / CHAIRS

TECHNICAL DESCRIPTION

Brera chair proposes a classical model through a contemporary style. The internal tubular oval structure is totally upholstered in thick-leather, while the back shaped enhances handling of the chair. The consequent dynamic profile is enriched with both the back and the seat upholstery which apart from being aesthetic it is also functional.



DESIGNER

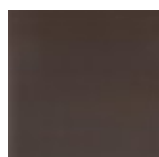
FRANCESCO LUCCHESI

Lucchesedesign is a multidisciplinary team made up of architects and designers with different cultural backgrounds. Francesco Lucchese is the founder and team leader and has more than twenty year's experience in the field of architecture, design and consultancy. Lucchesedesign studio operates all over the world with different levels of projects Depending on the client's request, showing a great capacity to adapt to different contexts and offering a wide approach and a 360° perspective of the services. The opening of the new headquarters in Nanjing in China makes the structure competitive for working in the Asian market from a logistical point of view and provides customers with a close assistance while ensuring a direct presence in the territory. Lucchesedesign coordinates projects of company placement and brand identity focusing the attention on graphic design and organizing exhibitions and events. Architecture projects take place across Italy and abroad and are focused on hotels, showrooms and public spaces. There are plenty of projects aimed to exclusive private residences. Meanwhile Francesco Lucchese proceeds his teaching activity for **Politecnico di Milano**, at Faculty of Design, with many partecipations in workshops and conferences as a speaker in foreign countries like Switzerland, Russia and China. He is also member of the steering committee of the Italian Design Association **ADI**.



FINISHINGS

THICK LEATHER



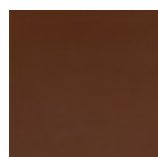
K28 Fango



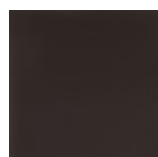
K18
Graphite



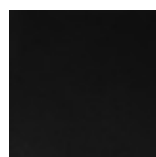
K29 Taupè



K25
Bruciato



K11 Moka



K06 Nero

DIMENSIONS

Chair

