

ANTIBES

FERRUCCIO LAVIANI



The **Antibes** sofa combines subtlety with lightness. The wooden base, tapered feet and fabric upholstery come together to create an inviting, whispered aesthetic, where sophisticated craftsmanship and stunning design strike a perfect balance.

TYPE / SOFAS

TECHNICAL DESCRIPTION

Antibes is a sofa system available in a fixed and modular version.

It includes 3 fixed sofas, with 6 terminal and corner units and 1 chaise longue unit to form many different linear or corner compositions.

Sofa base in solid wood in oak stained, structure in wood and multilayer board with elastic belts covered with polyurethane foam, dacron fibre and light velvet.

Cushions in polyurethane foam with different densities and feather inlay, cushions with removable covers.

Structure in fabric that can be removed after the wooden base is taken off, structure in leather is not removable. Upholstered fabric or leather.



DESIGNER

FERRUCCIO LAVIANI

Born in Cremona in 1960 Laviani attends the Istituto Professionale Internazionale per l'Artigianato Liutario e del Legno di Cremona, receiving his degree in 1978. He later attends the Faculty of Architecture, at the Politecnico di Milano where he graduates in 1986, while attending at the same time the Scuola Politecnica di Design in Milan from 1982 to 1984. In 1983 he starts working for Michele De Lucchi; he becomes a partner in 1986 and works there until 1991, when he decides to open his own studio in Milan. Laviani's work mainly focuses on product design, interior design, art direction and graphic. Since 1991, he is the Art Director for Kartell; same role he has played for other companies. He designs retail spaces and set-ups, offices and houses for private clients, as well as for furniture and fashion. In 2008 an exhibition was dedicated to the lamps he designed for Kartell. Bourgie and Take lamps for Kartell are part of the permanent Collection of IMA, *Indianapolis Museum of Art (USA)*; also other products have been featured in museums and shows all over the world. In 2015, Laviani develops the new concept for Kartell Museum in Noviglio, updating the interior design he had conceived in 1999, when he received the award Premio Guggenheim Impresa & Cultura 2000, as the best museum of a company. Last year, he has started a collaboration with the Italian mosaic brand Bisazza. In 2016 Ferruccio has designed the pop-up store for the fashion designer Paula Cademartori and the set-up for the Haute Couture Women show for Dolce e Gabbana, at Laboratori Ansaldo, Teatro alla Scala, Milan.



COVER FINISHINGS

INDIO



A31
Madreperla

A36 Quarzo

A35 Pietra

A32
Malachite

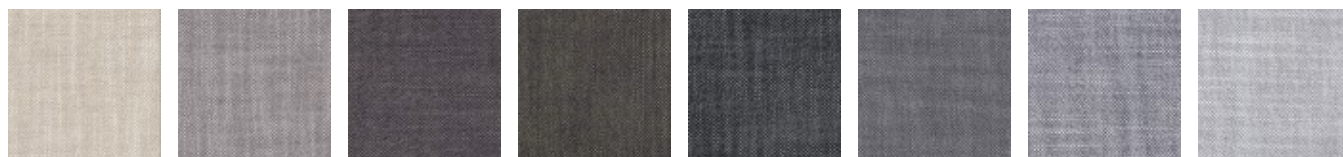
A30 Ematite

A33 Zaffiro

A34 Onice
verde

A37 Basalto

NODONE



A41 Sabbia

A47 Argilla

A48
Corteccia

A44 Muschio

A40 Carbone

A46 Roccia

A43 Ghiaia

A42 Sasso

JOJO



B41 Cicogna

B46 Fungo

B48 Radice

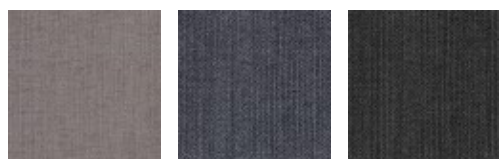
B4A Ghianda

B49
Scoiattolo

B47
Marmotta

B44 Lichene

B43 Ghiro

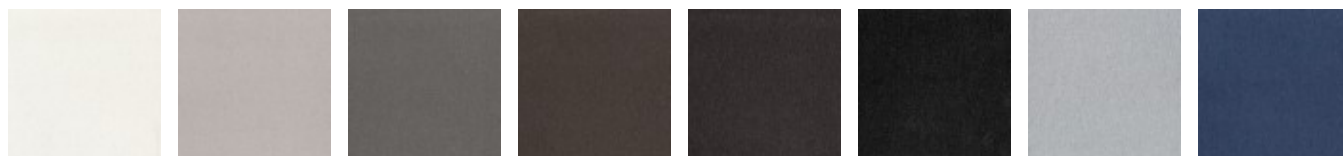


B45 Tortora

B42 Piccione

B40 Corvo

629



B61 White

B66 Beige

B69 Light
brown

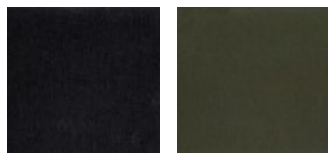
B67 Taupè

B65 Brown

B68 Dark
brown

B62 Light
gray

B63 Blue



B60 Black

B64 Green

BARBAT



B31 Cigno

B36 Tortora

B37
Beccaccino

B34 Airone

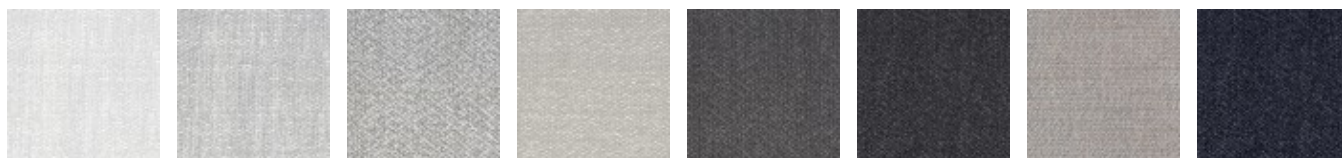
B32 Ghiro

B33 Piccione

B35 Riccio

B30 Corvo

TULSA



C82 Orso
polare

C83 Airone

C85 Lepre

C88 Alpaca

C86 Cervo

C81 Corvo

C87
Alligatore

C84 Squalo
blu

M155



C91 Platino

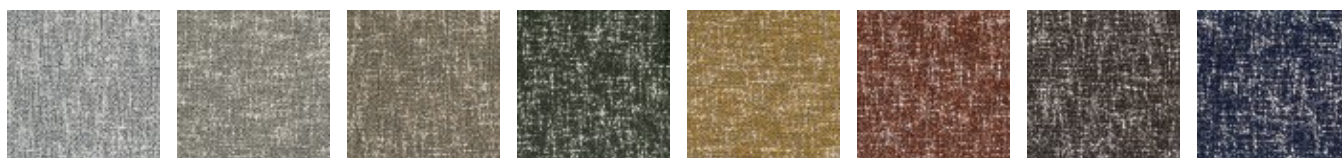
C92 Argento

C90 Ferro

C93 Oro

C94 Bronzo

FUNKY



C70 White
mix

C71 Rock
mix

C7A Nuts
mix

C78 Green
mix

C76 Mustard
mix

C77 Orange
mix

C72 Brown
mix

C79 Blue
mix



C73 Iron mix



C74 Grey mix



C75 Black mix

ARTIDE



C20 Ecrù

BRERA



D31 Cigno



D36 Tortora



D37 Gufo



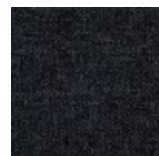
D34 Picchio verde



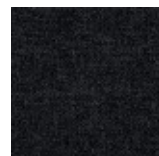
D32 Airone



D35 Piccione



D33 Rondine



D30 Corvo

INDIANSKOP



D1B Sabbia



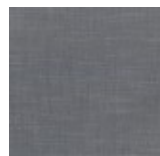
D1G Creta



D1F Betulla



D1C Sasso



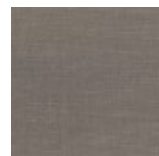
D1D Roccia



D1A Carbone



D1E Lichene



D1H Terra

TUNDRA



D2B Cigno



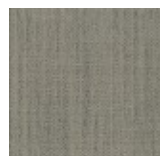
D2F Tortora



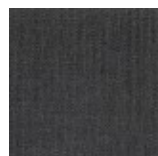
D2G Fungo



D2H Cicogna



D2L Ghianda



D2J Cervo



D2E Lichene



D2C Ghiro



D2D Lupo D2K Talpa D2A Corvo

FLYNN

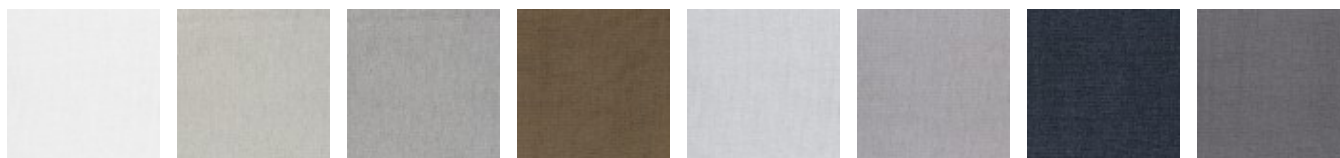


D3B Rugiada D3F Pietra D3G Roccia D3L Civetta D3J Gufo D3K Daino D3E Muschio D3H Guscio di lumaca

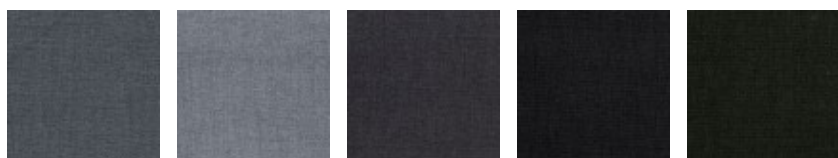


D3C Nebbia D3D Pioggia D3A Notte

GONG

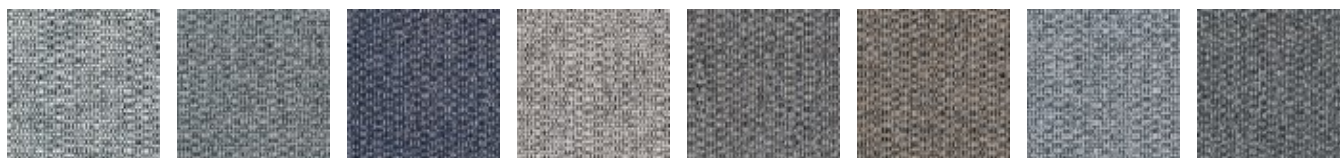


E61 Cigno E67 Creta E6C Lumaca E68 Scoiattolo E62 Airone E65 Tortora E6A Blu fiume E6B Talpa

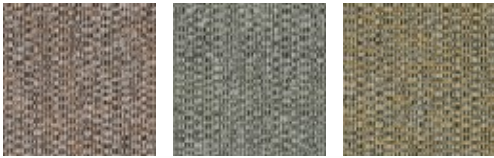


E66 Riccio E63 Passero E69 Orso bruno E60 Rondine E64 Felce

TADAO



E81 White mix E85 Sand mix E83 Zaffiro mix E86 Snow mix E88 Bronze mix E87 Cappuccino mix E82 Stone mix E80 Taupè mix



E89 Rust mix

E84 Green mix

E90 Sulfur mix

YELLOWSTONE



E96 Rugiada

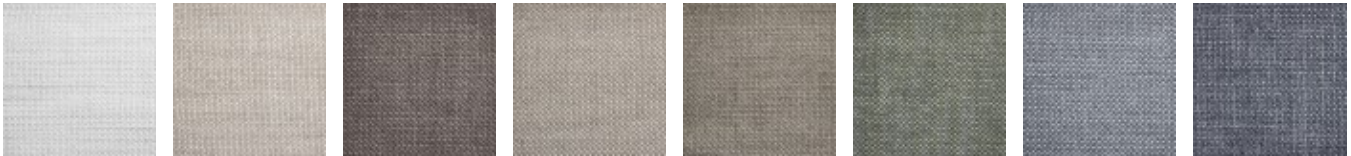
E99 Sabbia

E98 Terra

E95 Pietra

E97 Corteccia

GEMMA PLUS



D54 Cigno

D59 Fungo

D61 Castagna

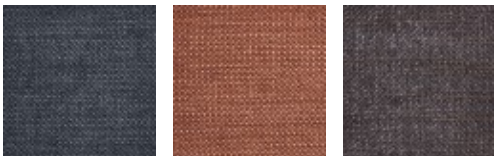
D65 Lumaca

D60 Nocciola

D57 Sotto bosco

D55 Ghiro

D56 Gufo

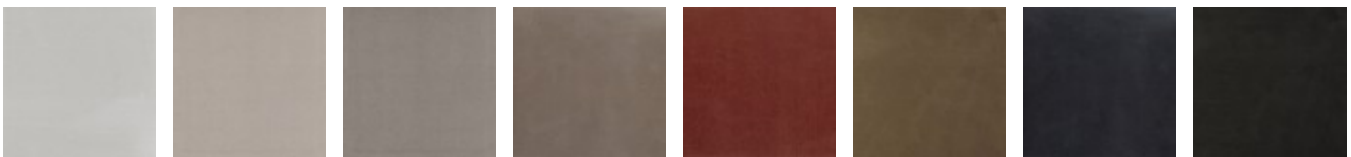


D73 Rondine

D66 Volpe

D58 Riccio

VELLUTO LARIO



F33 Pietra

F56 Sabbia

F57 Tortora

F51 Scoiattolo

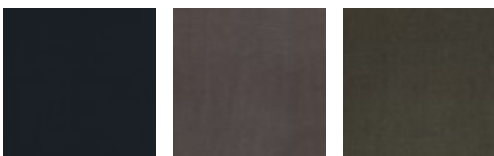
F54 Volpe

F55 Cervo

F35 Rondine

F53 Corteccia

VELLUTO REGAL



F58 Mirtillo

F5A Castagna

F59 Muschio

MisuraEmme®

LUXUS



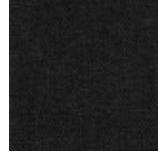
E50 Bianco



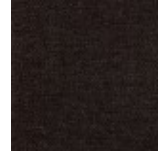
F01 Ecrù

F02 Grigio
perla

F05 Blu



F03 Lava

F04 Testa di
moro

GAUCHO



F28 Neve



F21 Nebbia

F29
GrandineF20
Tempesta di
sabbia

F25 Solstizio

F26
TramontoF24 Acque
tropicali

F23 Nube



F27 Foresta

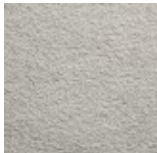


F22 Tornado

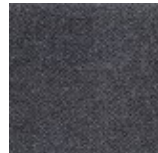
ORSETTO



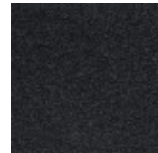
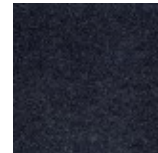
H1B Perla

H1G
ConchigliaH1H
Alabastro

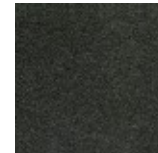
H1C Opale



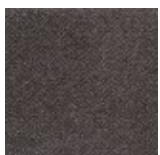
H1F Ematite

H1A Onice
nero

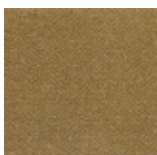
H1D Zaffiro



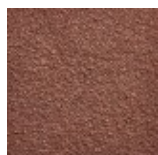
H1E Giada



H1J Agata



H1L Topazio

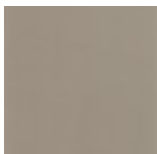
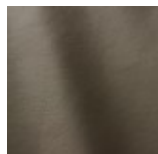


H1K Ambra

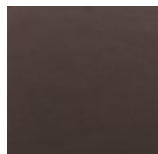
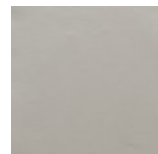
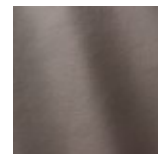
SMOOTH LEATHERS



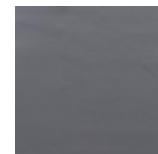
H38 Sabbia

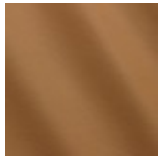
H36
Camoscio

H3F Muschio

H71 Testa di
MoroH3E Grigio
CaldoH35 Grigio
Chiaro

H08 Asfalto

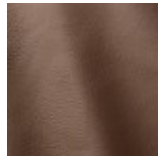
H26
Antracite



H3B Cuoio



H31
Naturale



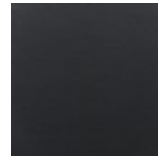
H3A
Terracotta



H34 Fango



H32 Taupè

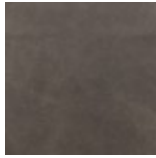


H73 Nero

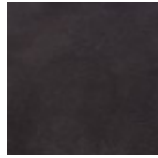
NUBUCK



HN3 Leone



HN2
Rinoceronte



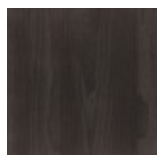
HN1 Orso
bruno

BASE FINISHINGS

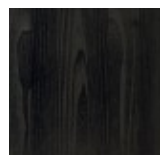
MATT VENEERS



50 Rovere
cenere



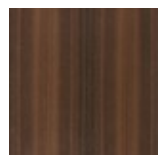
53 Elm grey



51 Black oak



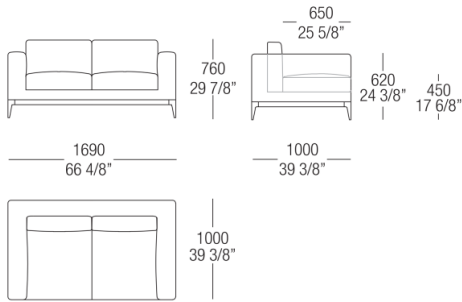
66 Tobacco



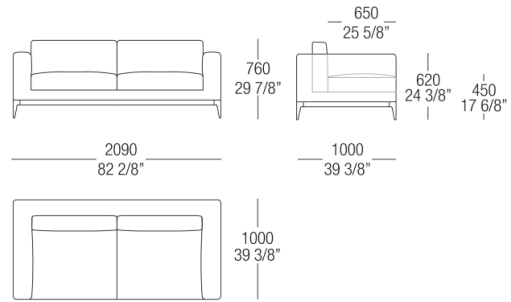
54
Eucalyptus

DIMENSIONS

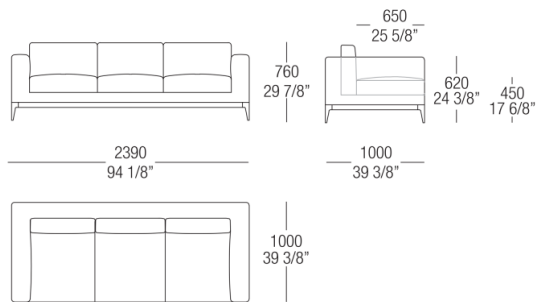
Sofa W. 1690 mm



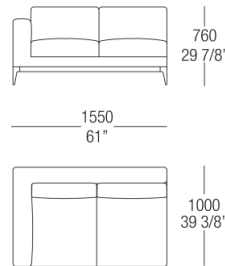
Sofa W. 2090 mm



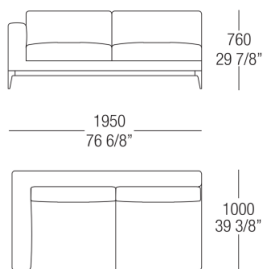
Sofa W. 2390 mm



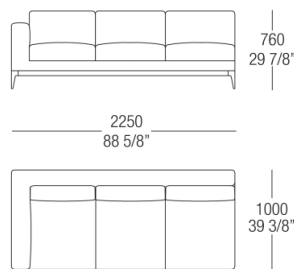
Terminal element W. 1550 mm



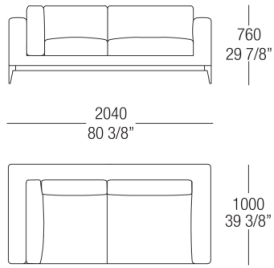
Terminal element W. 1950 mm



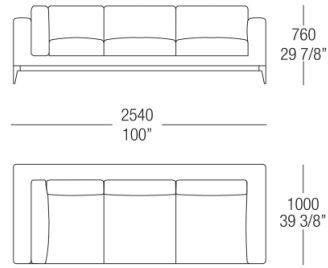
Terminal element W. 2250 mm



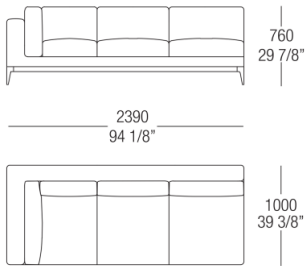
Corner element W. 2040 mm



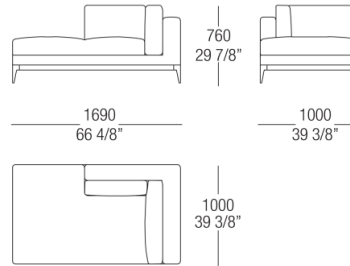
Corner element W. 2540 mm



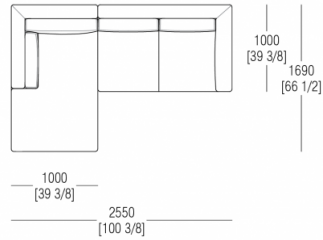
Corner element W. 2390 mm



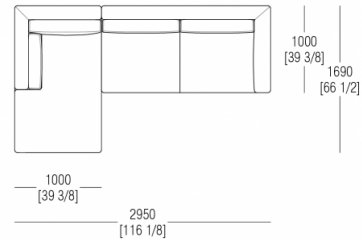
Chaise longue W. 1690 mm



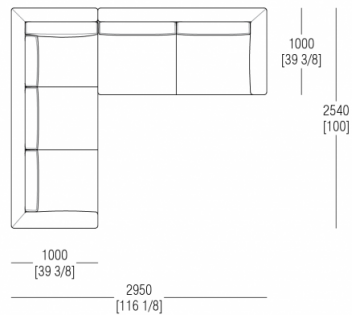
Composition W. 2550 x D. 1690 mm



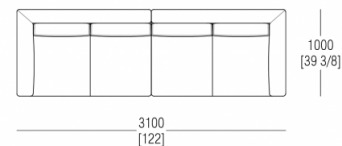
Composition W. 2950 x D. 1690 mm



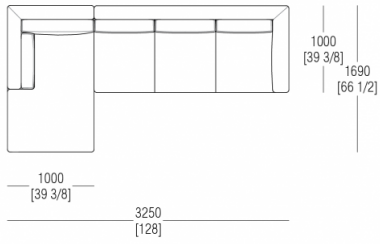
Composition W. 2950 x D. 2540 mm



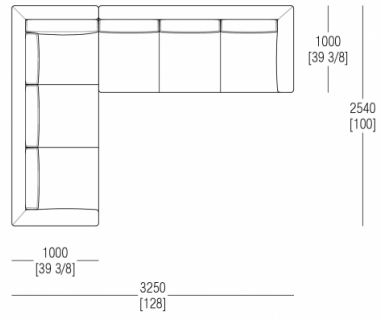
Composition W. 3100 x D. 1000 mm



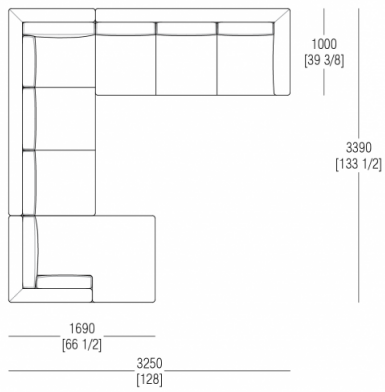
Composition W. 3250 x D. 1690 mm



Composition W. 3250 x D. 2540 mm



Composition W. 3250 x D. 3390 mm



Composition W. 3900 x D. 1000 mm

