



DESCRIZIONE TECNICA / TECHNICAL DESCRIPTION

TESTIERA Legno imbottito con Poliuretano e Fiberfill

BASE Pannelli smontabili di legno assemblati con elementi in metallo e imbottiti con Poliuretano e Fiberfill

RETE Doghe in legno di faggio

RIVESTIMENTO Tessuto o pelle non removibile (escluso pelli stampate), retro testiera in fodera

Filetto in pelle a scelta. Base letto svestibile

PIEDI Legno tinto wengé

ACCESSORIO Porta telecomando per sponda 4 cm (vedi listino prezzi LL Sleeping Interiors)

OPTIONAL 1 Retro testiera rivestita in tessuto o pelle

OPTIONAL 2 Base con contenitore

OPTIONAL RUNNER Due runner in tessuto o pelle con ricamo logo oval coordinato al filetto in pelle

HEADBOARD Wood padded with Polyurethane and Fiberfill

STRUCTURE Detachable wooden panels assembled with metal elements and covered with Polyurethane and Fiberfill

BED BASE Beech wooden slats

COVER Not removable fabric or leather (printed leather not included), headboard back with lining. Leather piping on request. Base with loose cover

FEET Wood stained wengé

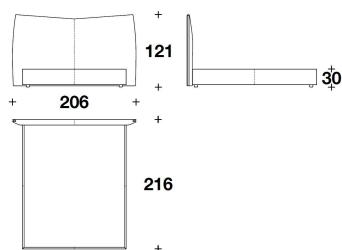
ACCESSORY Telecontrol accessory for lateral side 4 cm (see LL Sleeping Interiors price list)

OPTIONAL 1 Back headboard covered in fabric or leather

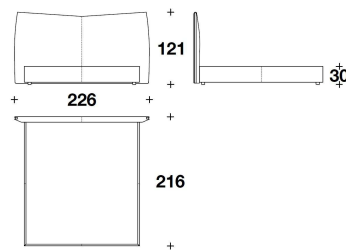
OPTIONAL 2 Bed frame with storage

OPTIONAL RUNNER Two fabric or leather runners, with oval logo embroidery coordinated with the leather piping

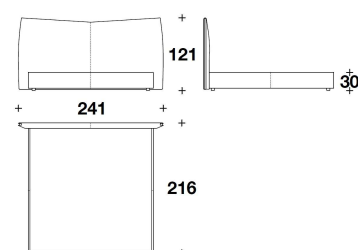




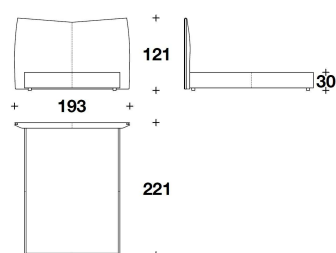
DLS (LE1)
 LETTO PER MATERASSO / BED FOR MATTRESS
 165x200 - 206x216x121H. - H.B.30cm
 65x78 2/3 - 81x85x47 2/3H. - H.B.11 3/4"



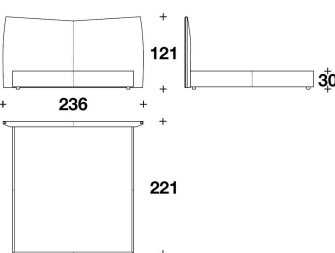
DLS (LE2)
 LETTO PER MATERASSO / BED FOR MATTRESS
 185x200 - 226x216x121H. - H.B.30cm
 73x78 2/3 - 89x85x47 2/3H. - H.B.11 3/4"



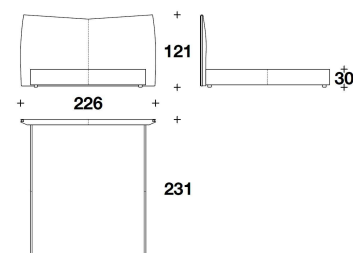
DLS (LE7)
 LETTO PER MATERASSO / BED FOR MATTRESS
 200x200 - 241x216x121H. - H.B.30cm
 78 2/3x78 2/3 - 95x85x47 2/3H. - H.B.11 3/4"



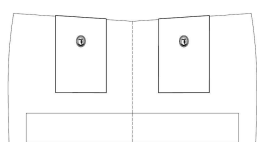
DLS (QUSA)
 QUEEN USA : LETTO PER MATERASSO / BED FOR MATTRESS
 152x205 - 193x221x121H. H.B.30cm
 60x80 2/3 - 76x87x47 2/3H. H.B.11 3/4"



DLS (KUSA)
 KING USA : LETTO PER MATERASSO / BED FOR MATTRESS
 195x205 - 236x221x121H. - H.B.30cm
 76 2/3x80 2/3 - 93x87x47 2/3H. - H.B.11 3/4"



DLS (CUSA)
 CALIFORNIA USA : LETTO PER MATERASSO / BED FOR MATTRESS
 183x215 - 226x231x121H. - H.B.30cm
 72x84 2/3 - 89x91x47 2/3H. - H.B.11 3/4"



DLS (LE/OPT)
 OPTIONAL RUNNER: : SET 2 PEZZI / 2 PIECES SET

Note