

# CANNES

FERRUCCIO LAVIANI



The **Cannes** sofa is more like a collection of different elements that can be connected up to create a whole. These freestanding parts can be mixed and matched to suit each owner's taste, ensuring no two solutions are ever the same. Style and practicality are the watchwords of this contemporary sofa.

## TYPE / SOFAS

### TECHNICAL DESCRIPTION

**Cannes** is a sofa system available in a fixed and modular version that offers many different possibilities of compositions. It is made up of 9 base units that can be combined to form linear and corner compositions.

**Structure** in wood with elastic belts, coated with polyurethane foam with different densities and feather inlay on backrest and seat cushions. All metal parts are in satin nickel. Available with or without lateral decorative brackets.

**Coverings** are available in fabric or leather. Fabric covers can be removed by expert personnel after having disassembled the backrest, leather upholstery is not removable.

**Tray top** matt lacquered, W 380 D 1070 mm (W 15" D 42 1/8" inch).

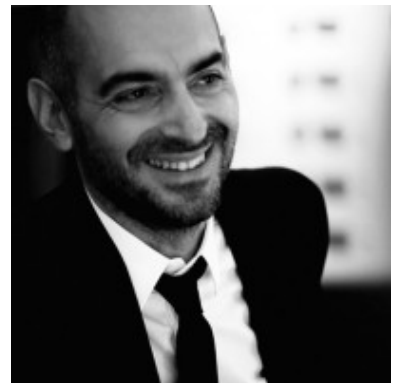
**MisuraEmme**<sup>®</sup>



# DESIGNER

## FERRUCCIO LAVIANI

Born in Cremona in 1960 Laviani attends the Istituto Professionale Internazionale per l'Artigianato Liutario e del Legno di Cremona, receiving his degree in 1978. He later attends the Faculty of Architecture, at the Politecnico di Milano where he graduates in 1986, while attending at the same time the Scuola Politecnica di Design in Milan from 1982 to 1984. In 1983 he starts working for Michele De Lucchi; he becomes a partner in 1986 and works there until 1991, when he decides to open his own studio in Milan. Laviani's work mainly focuses on product design, interior design, art direction and graphic. Since 1991, he is the Art Director for Kartell; same role he has played for other companies. He designs retail spaces and set-ups, offices and houses for private clients, as well as for furniture and fashion. In 2008 an exhibition was dedicated to the lamps he designed for Kartell. Bourgie and Take lamps for Kartell are part of the permanent Collection of IMA, *Indianapolis Museum of Art (USA)*; also other products have been featured in museums and shows all over the world. In 2015, Laviani develops the new concept for Kartell Museum in Noviglio, updating the interior design he had conceived in 1999, when he received the award Premio Guggenheim Impresa & Cultura 2000, as the best museum of a company. Last year, he has started a collaboration with the Italian mosaic brand Bisazza. In 2016 Ferruccio has designed the pop-up store for the fashion designer Paula Cademartori and the set-up for the Haute Couture Women show for Dolce e Gabbana, at Laboratori Ansaldo, Teatro alla Scala, Milan.



# COVER FINISHINGS

## INDIO



A31  
Madreperla

A36 Quarzo

A35 Pietra

A32  
Malachite

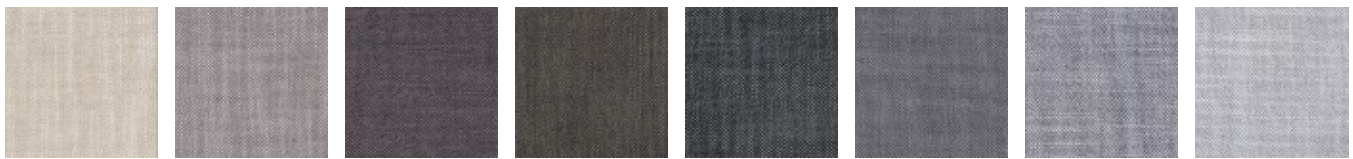
A30 Ematite

A33 Zaffiro

A34 Onice  
verde

A37 Basalto

## NODONE



A41 Sabbia

A47 Argilla

A48  
Corteccia

A44 Muschio

A40 Carbone

A46 Roccia

A43 Ghiaia

A42 Sasso

## JOJO



B41 Cicogna

B46 Fungo

B48 Radice

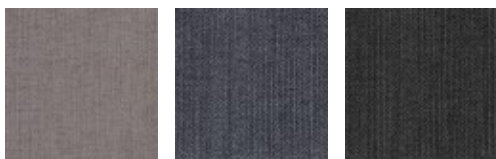
B4A Ghianda

B49  
Scoiattolo

B47  
Marmotta

B44 Lichene

B43 Ghiro

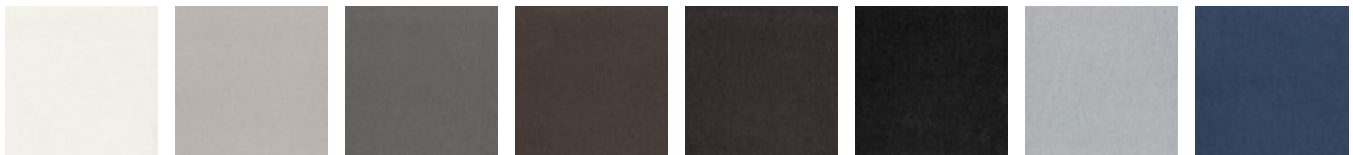


B45 Tortora

B42 Piccione

B40 Corvo

## 629



B61 White

B66 Beige

B69 Light  
brown

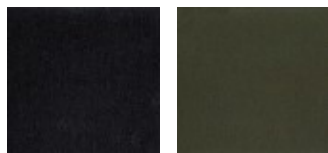
B67 Taupè

B65 Brown

B68 Dark  
brown

B62 Light  
gray

B63 Blue



B60 Black

B64 Green

### BARBAT



B31 Cigno

B36 Tortora

B37  
Beccaccino

B34 Airone

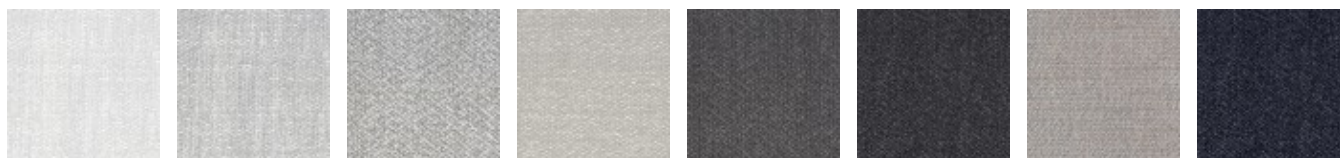
B32 Ghiro

B33 Piccione

B35 Riccio

B30 Corvo

### TULSA



C82 Orso  
polare

C83 Airone

C85 Lepre

C88 Alpaca

C86 Cervo

C81 Corvo

C87  
Alligatore

C84 Squalo  
blu

### M155



C91 Platino

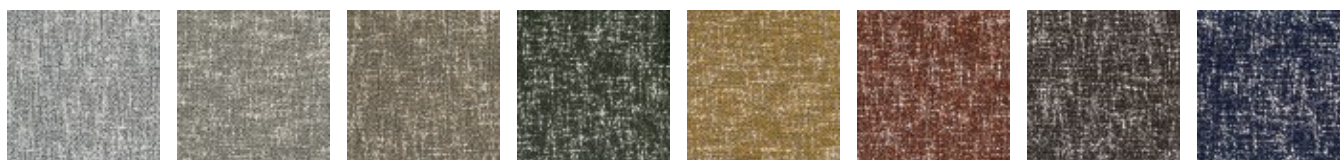
C92 Argento

C90 Ferro

C93 Oro

C94 Bronzo

### FUNKY



C70 White  
mix

C71 Rock  
mix

C7A Nuts  
mix

C78 Green  
mix

C76 Mustard  
mix

C77 Orange  
mix

C72 Brown  
mix

C79 Blue  
mix



C73 Iron mix

C74 Grey mix

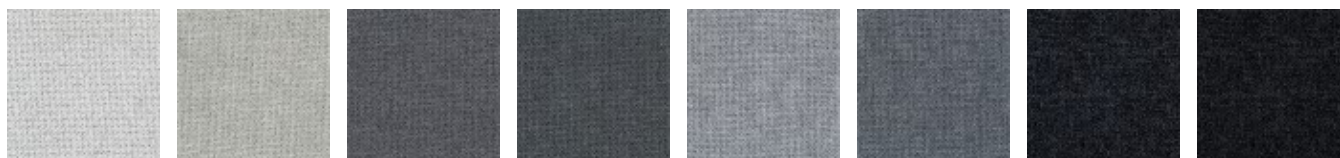
C75 Black mix

### ARTIDE



C20 Ecrù

### BRERA



D31 Cigno

D36 Tortora

D37 Gufo

D34 Picchio verde

D32 Airone

D35 Piccione

D33 Rondine

D30 Corvo

### INDIANSKOP



D1B Sabbia

D1G Creta

D1F Betulla

D1C Sasso

D1D Roccia

D1A Carbone

D1E Lichene

D1H Terra

### TUNDRA



D2B Cigno

D2F Tortora

D2G Fungo

D2H Cicogna

D2L Ghianda

D2J Cervo

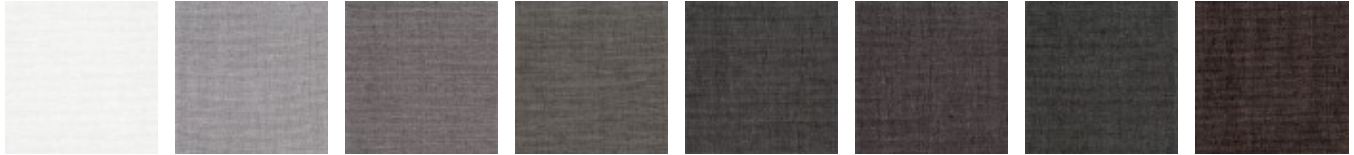
D2E Lichene

D2C Ghiro



D2D Lupo    D2K Talpa    D2A Corvo

FLYNN



D3B Rugiada    D3F Pietra    D3G Roccia    D3L Civetta    D3J Gufo    D3K Daino    D3E Muschio    D3H Guscio di lumaca

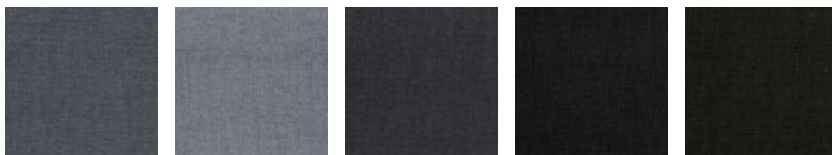


D3C Nebbia    D3D Pioggia    D3A Notte

GONG

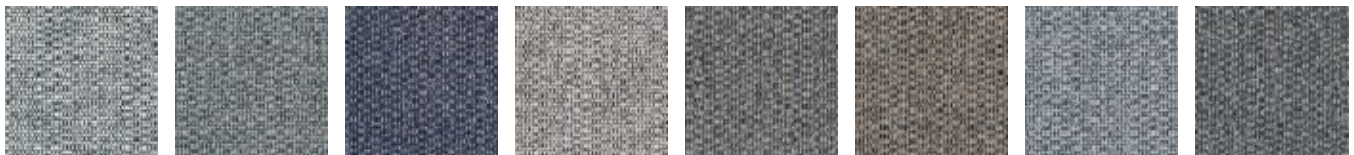


E61 Cigno    E67 Creta    E6C Lumaca    E68 Scoiattolo    E62 Airone    E65 Tortora    E6A Blu fiume    E6B Talpa



E66 Riccio    E63 Passero    E69 Orso bruno    E60 Rondine    E64 Felce

TADAO



E81 White mix    E85 Sand mix    E83 Zaffiro mix    E86 Snow mix    E88 Bronze mix    E87 Cappuccino mix    E82 Stone mix    E80 Taupè mix

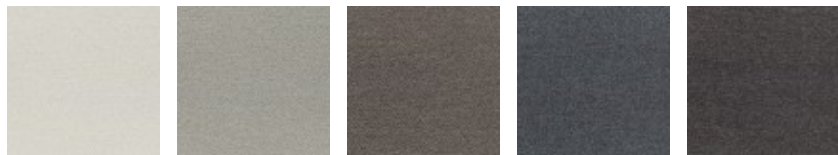


E89 Rust mix

E84 Green mix

E90 Sulfur mix

### YELLOWSTONE



E96 Rugiada

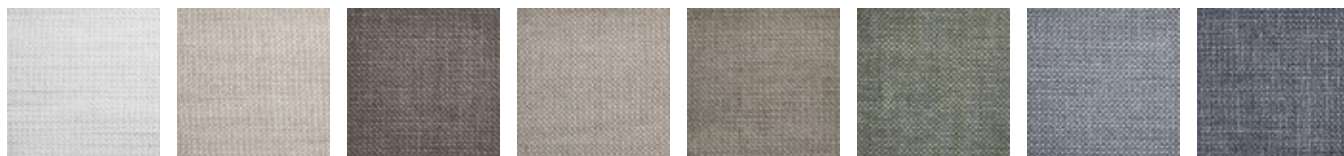
E99 Sabbia

E98 Terra

E95 Pietra

E97 Corteccia

### GEMMA PLUS



D54 Cigno

D59 Fungo

D61 Castagna

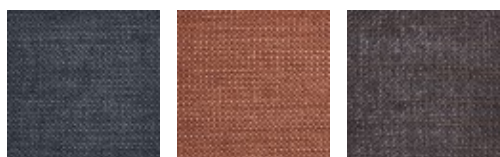
D65 Lumaca

D60 Nocciola

D57 Sotto bosco

D55 Ghiro

D56 Gufo



D73 Rondine

D66 Volpe

D58 Riccio

### VELLUTO LARIO



F33 Pietra

F56 Sabbia

F57 Tortora

F51 Scoiattolo

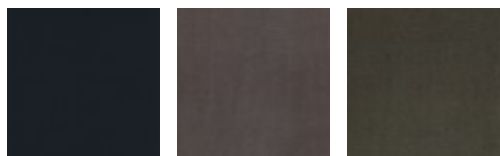
F54 Volpe

F55 Cervo

F35 Rondine

F53 Corteccia

### VELLUTO REGAL

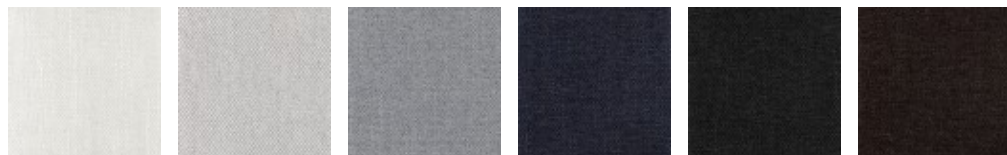


F58 Mirtillo

F5A Castagna

F59 Muschio

### LUXUS

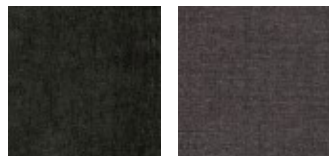


E50 Bianco    F01 Ecrù    F02 Grigio perla    F05 Blu    F03 Lava    F04 Testa di moro

### GAUCHO



F28 Neve    F21 Nebbia    F29 Grandine    F20 Tempesta di sabbia    F25 Solstizio    F26 Tramonto    F24 Acque tropicali    F23 Nube

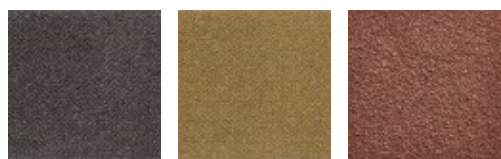


F27 Foresta    F22 Tornado

### ORSETTO

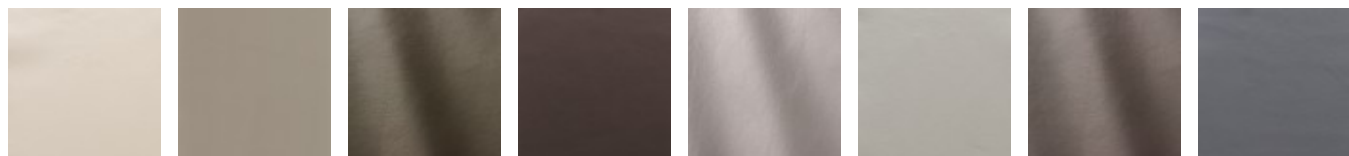


H1B Perla    H1G Conchiglia    H1H Alabastro    H1C Opale    H1F Ematite    H1A Onice nero    H1D Zaffiro    H1E Giada



H1J Agata    H1L Topazio    H1K Ambra

### SMOOTH LEATHERS



H38 Sabbia    H36 Camoscio    H3F Muschio    H71 Testa di Moro    H3E Grigio Caldo    H35 Grigio Chiaro    H08 Asfalto    H26 Antracite





H3B Cuoio

H31  
Naturale

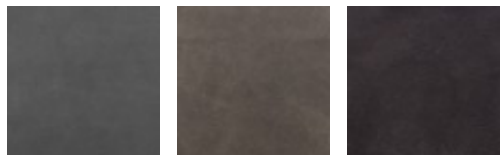
H3A  
Terracotta

H34 Fango

H32 Taupè

H73 Nero

### NUBUCK



HN3 Leone

HN2  
Rinoceronte

HN1 Orso  
bruno

### NABUK



N08 Orso  
polare

N05  
Rinoceronte

N14  
Antilope

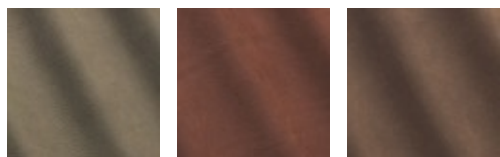
N11 Lupo

N12 Balena

N09 Squalo  
blu

N10 Tigre

N07 Leone



N04  
Alligatore

N06 Volpe

N13 Orso  
bruno

# STRUCTURE FINISHINGS

## METALS



524  
Varnished  
Gun metal

# TRAY FINISHINGS

## MATT LACQUERED



01 Gesso    8B Caolino    9G Ostrica    6B Grigio Pietra    14 Nero    02 Talco    9F Sand    4G Argilla



8C Cappuccino    5B Grigio Lava    72 Sabbia    8A Beige    9T Toffee    93 Melange    13 Sepia    12 Vinaccia



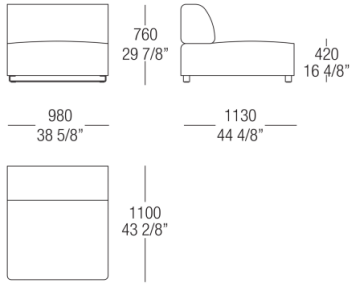
09 Wengè    81 Fuoco    94 Marsala    95 Ruggine    8S Giallo    9B Senape    98 Oliva    9H Petrolio



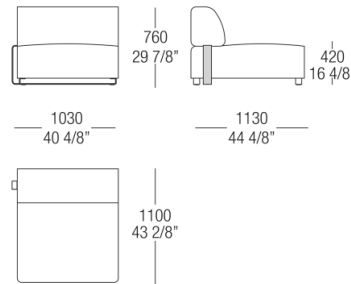
9E Deep Blu

# DIMENSIONS

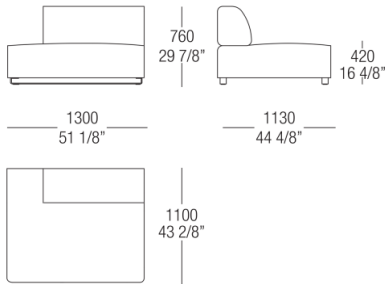
Central and terminal element W. 980 mm



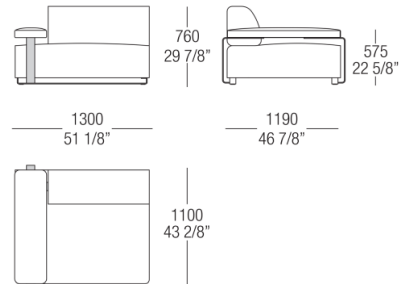
Central and terminal element with side metal bracket W. 1030 mm, SX-DX



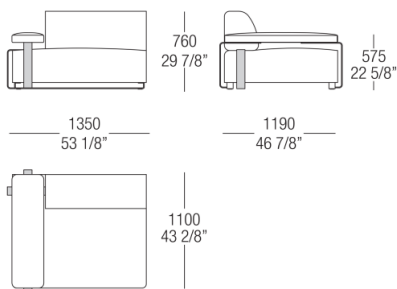
Central and terminal element without armrest W.1300 mm, SX-DX



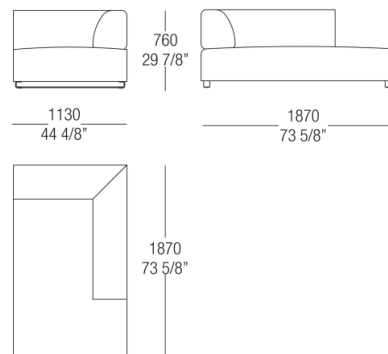
Central and terminal element with armrest W.1300 mm, SX-DX



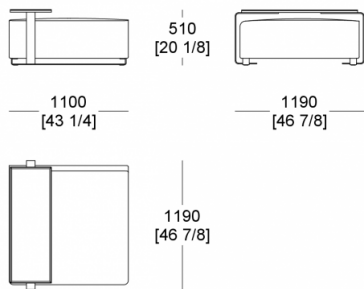
Central and terminal element with armrest and side bracket W.1350 mm, SX-DX



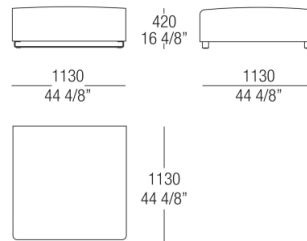
Chaise longue W. 1870 mm, SX-DX



Squared pouf with small table L. 1100 mm



Square pouf W. 1100 mm, SX-DX



Rectangular pouf W. 1870 mm, SX-DX

